

CAUTION: ALWAYS INSTALL PRODUCT FROM LEFT TO RIGHT AND REMEMBER THAT POLYMER UNDERGOES EXPANSION/CONTRACTION DUE TO TEMPERATURE VARIATIONS. FOR A BETTER LOOK WE RECOMMAND TO INSTALL PRODUCT ON FLAT SURFACES (EX: PLYWOOD PANELS OR OSB PANELS). IF SECTIONS ARE INSTALLED ON A WALL WITH FURRINGS, FURRING STRIPS MUST BE INSTALLED OBLIQUELY AND SPACED BY 8”(20,32CM).

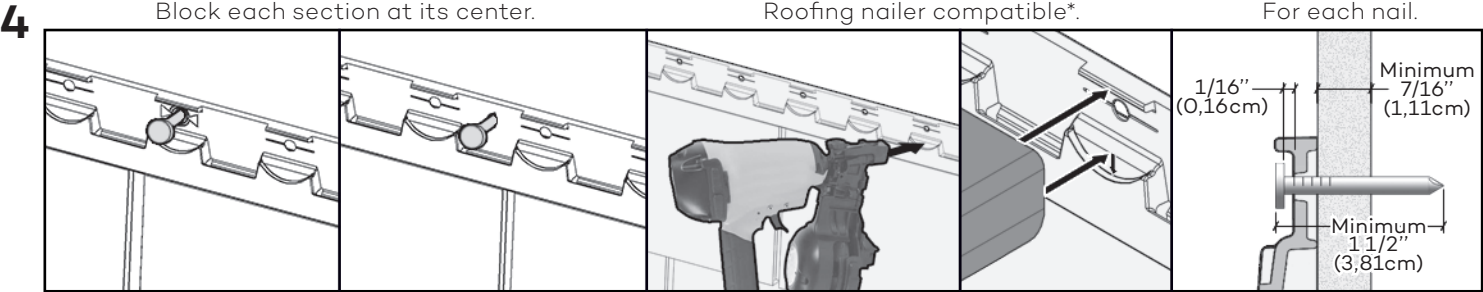
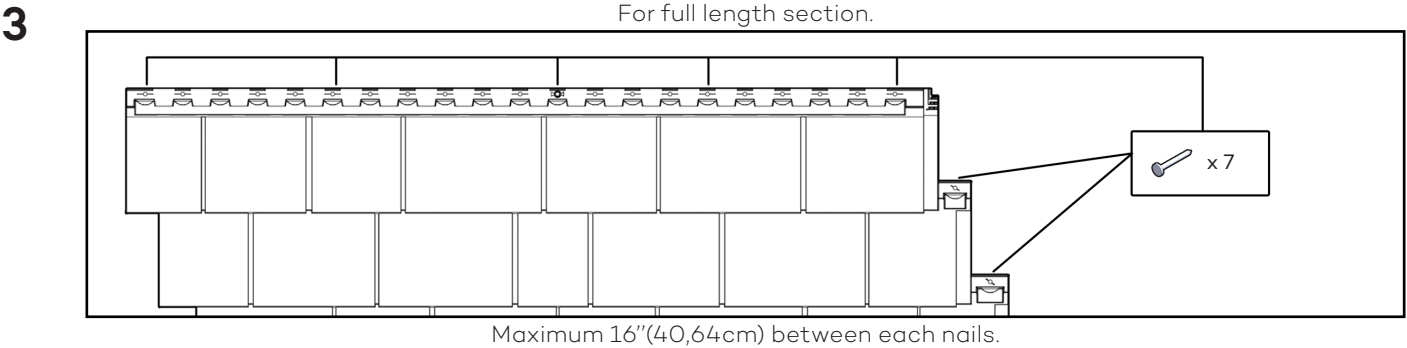
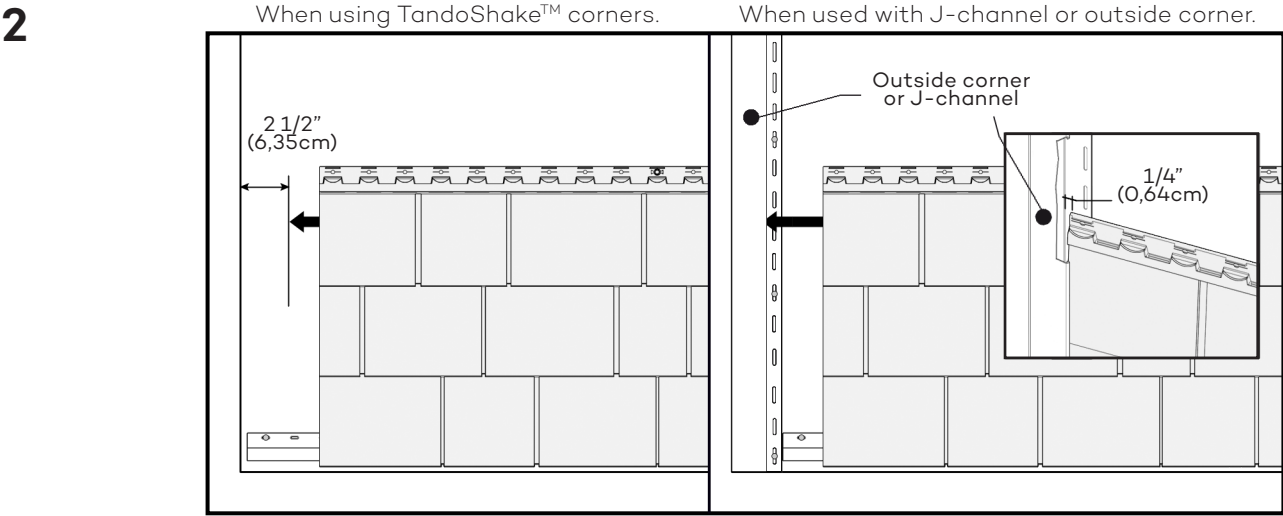
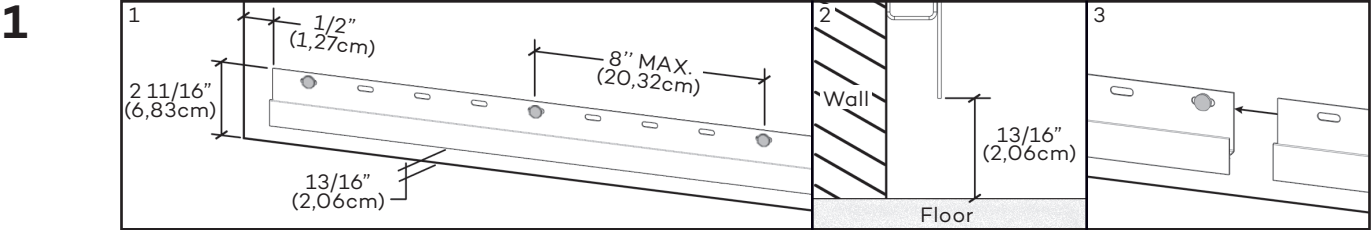
FRANÇAIS  
AU VERSO

ESPAÑOL

PORTUGUÊS

РУССКИЙ

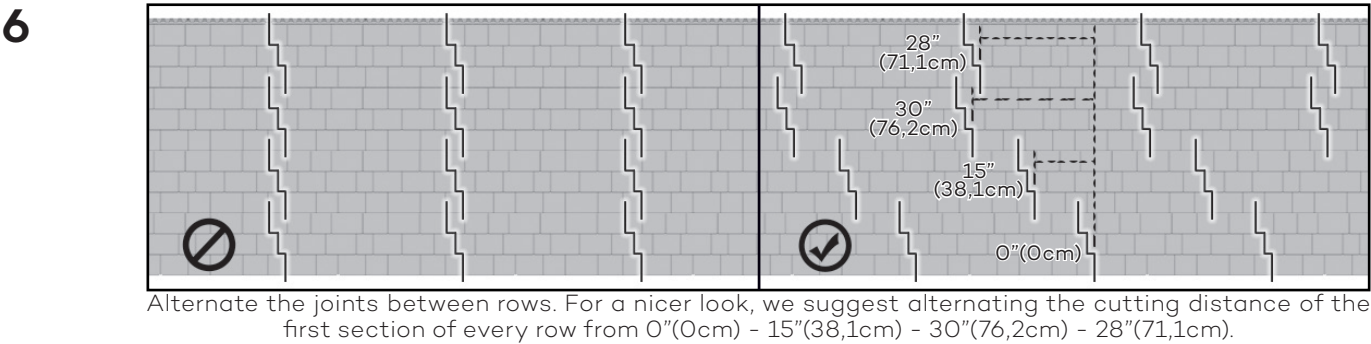
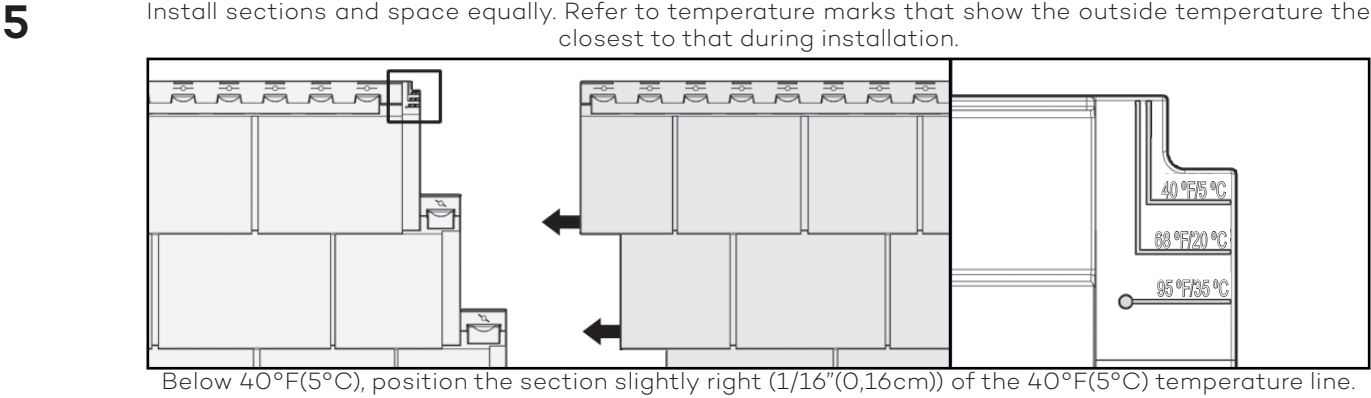
POLSKIE



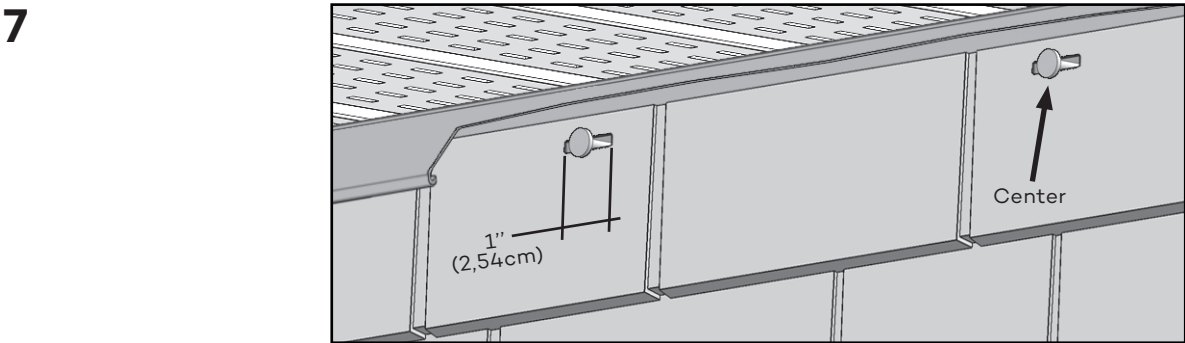
When installing a full section, nail in the center hole first. When installing a cut section, nail in its center. For each nail, leave a gap between nail head and section. When using a roofing nailer, adjust its tip at the highest position and the air pressure according to the substrate in order to leave the required gap.

\* Roofing nailer as Bostitch RN46 and Hitachi NV45.

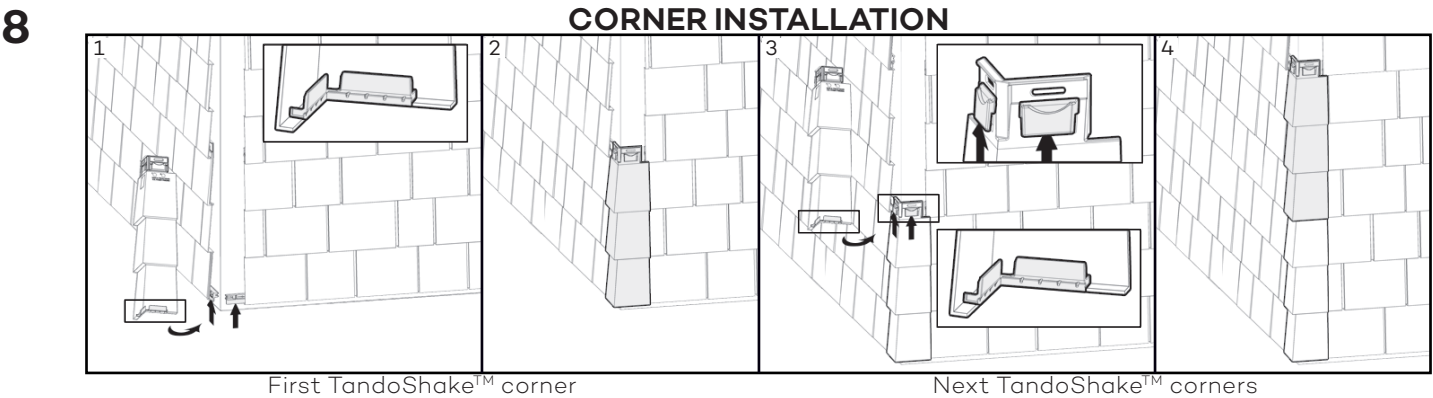
**Note:** For use in Miami-Dade and Florida High Velocity Hurricane Zones, please refer to installation instructions on Miami-Dade Approved Product Listing, available on our Tando website Resources page.



Alternate the joints between rows. For a nicer look, we suggest alternating the cutting distance of the first section of every row from 0”(0cm) - 15”(38,1cm) - 30”(76,2cm) - 28”(71,1cm).



If you need to attach the section in an area other than the installation hole, create a 1”(2,54 cm) long slot to allow nailing. Always nail in the middle of the slot.



First TandoShake™ corner

Next TandoShake™ corners

See TANDOCOMPOSITES.COM  
for the complete installation guide.

